

**COLLECTION SUPPLIES**

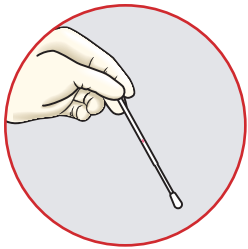
- VTM Vial (1)
- Nasal Swab (1)



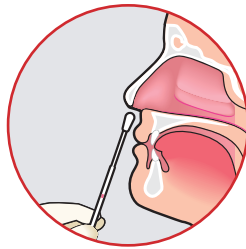
Break at breaking point  
 (not all swabs have red line)

Insert in  
 nostril

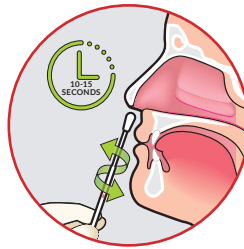
**COLLECT THE SAMPLE**



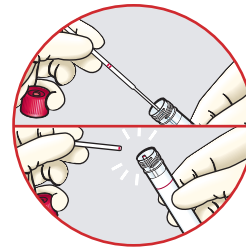
Remove the swab from its packaging, holding by the end of the applicator and identify the breaking point.



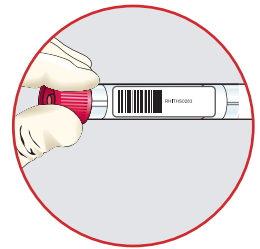
Position head slightly back, and insert the swab into the LEFT nostril and gently push the swab until a slight resistance is met (less than one inch into the nostril).



When the swab is in place, firmly sample the nasal membrane by rotating the swab in a circular motion for 10-15 seconds. Repeat in the RIGHT nostril."



While holding the swab, remove the cap from the VTM vial. Insert the swab, tip first, into the vial. Bend the swab shaft against the vial opening to break it off at the breaking point. If it doesn't break, or if it is too tall for the vial, use scissors to cut the swab shaft to fit.



Discard the broken part of the applicator and the swab wrapper into the trash. Screw the cap back onto the vial. Place patient specific barcode horizontally in-line with vial.

**LABEL THE SAMPLE**



**PATIENT SPECIFIC BARCODE MUST BE PLACED HORIZONTALLY IN-LINE WITH VIAL, AS PICTURED ABOVE.**



Place vial in specimen bag and seal bag

# FAQ's

## **IS YOUR TESTING FDA AUTHORIZED?**

Yes, Ethos SARS-CoV-2 active infection testing is FDA authorized.  
<https://www.fda.gov/media/140777/download>

## **WHAT IS THE TURN-AROUND TIME FOR RESULTS?**

Ethos guarantees 48 hour turnaround time in compliance with CMS guidelines.

## **WHO HANDLES THE STATE REPORTING OF TESTING RESULTS?**

Ethos handles all result reporting to the state.

## **IS THE LAB OPEN ON THE WEEKEND?**

The lab processes samples on Saturday for Friday collections. The lab is closed Sundays.

## **WHAT TYPE OF COLLECTION IS NEEDED?**

Ethos FDA Authorization is for Anterior Nares Sample collection the swab is inserted less than one inch into the nose. Please see back page.

## **DOES ETHOS PROVIDE COLLECTION SUPPLIES?**

Yes, Ethos will provide all collection supplies as well as a label printer for use with online ordering.

## **DO YOU PROVIDE COLLECTION SERVICES?**

Yes, Ethos can provide an employee to perform all collections at the facility.

## **HOW IS TESTING BILLED?**

The testing is billed through insurance. For those who do not have insurance a government fund has been created to cover the cost of testing.

## **HOW ARE TESTS ORDERED?**

All testing is ordered through Ethos' online portal.

## **CAN ETHOS INTEGRATE WITH OUR EMR?**

Yes, Ethos can integrate with EMRs for test orders and results.