

What has been the effect of the **SHUTDOWN OF ADULT DAY SERVICES?**

Adult day services are a community-based option where older adults and people with disabilities can receive the long-term services and supports (LTSS) they need while staying at home and in their communities. Adult day centers typically provide meals, social activities and a range of services, including dietary, social work, transportation and physical therapy. Many adult day services centers also provide access to nursing and other health services. People served by adult day services providers generally can go to adult day services centers up to five days per week. Adult day has been proven to delay the tendency towards institutionalization for individuals with dementia, and provides respite for caregivers.

While other care providers such as nursing homes and assisted living have been able to reopen visitation, adult day centers have been shut down in Ohio since March 21.



LeadingAge Ohio recently surveyed* a group of adult day services providers from around the state, which revealed:

100%

Reported that the level of need of their participants has increased



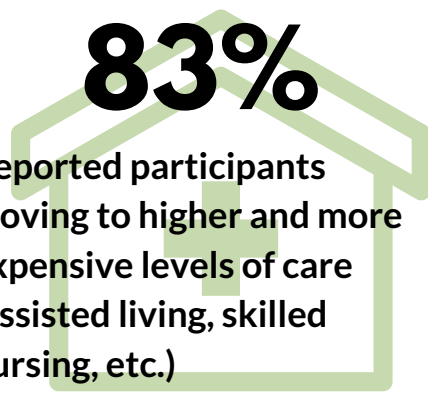
87%

Reported that the needs of the family caregivers of those they serve have increased



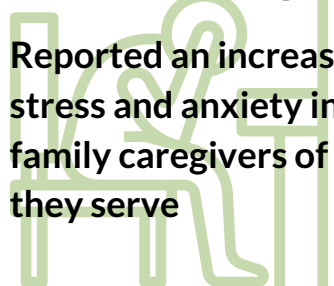
83%

Reported participants moving to higher and more expensive levels of care (assisted living, skilled nursing, etc.)



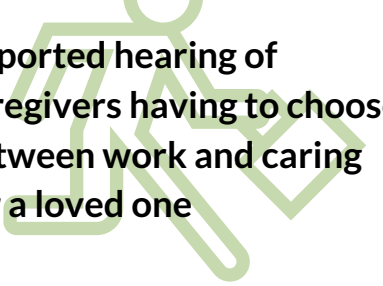
91%

Reported an increase in stress and anxiety in the family caregivers of those they serve



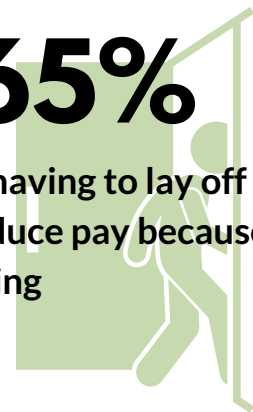
74%

Reported hearing of caregivers having to choose between work and caring for a loved one



65%

Reported having to lay off staff or reduce pay because of the closing



Ohio caregivers and adult day services providers speak*:
**WHAT EFFECTS HAVE CAREGIVERS
AND PARTICIPANTS OF ADULT DAY
SERVICES EXPERIENCED SINCE THE
SHUT DOWN?**

"Multiple case managers have contacted us searching for help for our clients. They (clients) need meals, socialization due to depression, supervision due to wandering, and activities to stimulate their minds."

"Our center has had multiple participants become enrolled in Nursing Homes and Assisted Living facilities due to the closure. We also have had participants decline cognitively due to the lack of socialization that they receive day to day at the center."

"We have heard from several (now full-time) caregivers that their employers have given them until the beginning of August to return to work or they are at risk for losing their job."

"They (caregivers) are now caregiving alone; stress, anxiety and social isolation has increased significantly."

"We believe this isolation has increased participant acuity and health issues. Participants are experiencing signs of worsening dementia."

"We have a client who gets up every morning and gets ready to go to the centers. He waits by the door at home to leave and his family member has to get him to sit back down."

