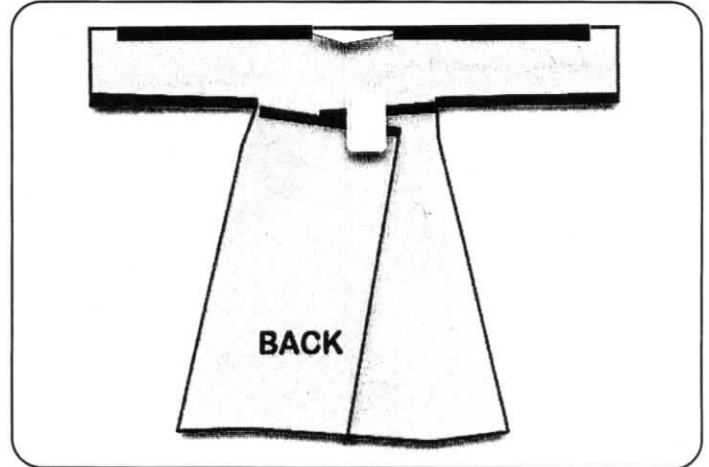
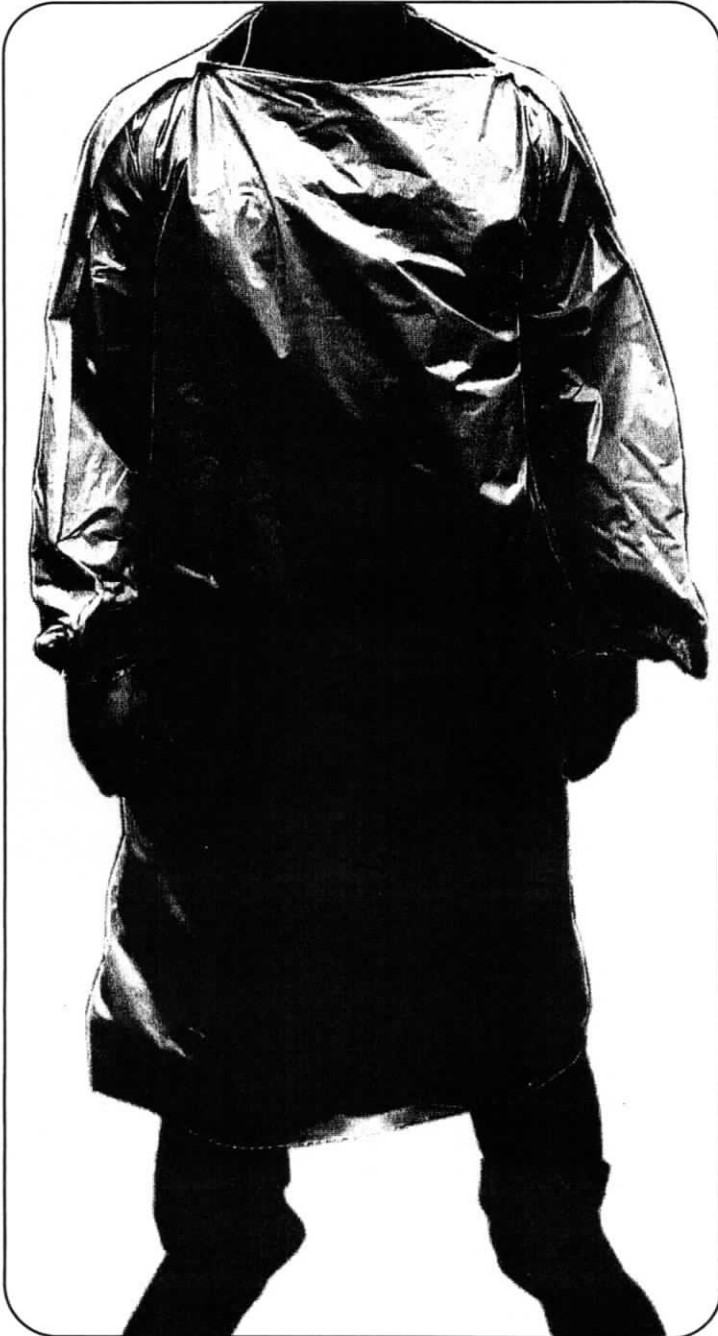


Isolation Gowns - T Style



SOLUTIONS FOR MEDICAL PROVIDERS AND FIRST RESPONDERS



Back side is secured with adhesive label or tape

FEATURES

- Complies with ANSI/AAMI PB70 Minimal Barrier Performance Level 1, Level 2 and Level 3 requirements
- Easy to put on and take off when time is critical
- Gap in end of sleeve seal for fingers/hand
- For non-surgical applications
- Long sleeve, full coverage
- Made from polyethylene (Virgin LLDPE)
- Extra-Large with straight sleeves
- Made in USA

PLEASE NOTE

- This product has **NOT** been FDA cleared or approved.

CAUTION

- This product is **NOT** sterilized.
- Use of this gown alone will not prevent infection from microbes or viruses.
- Do **NOT** use in the presence of high intensity heat source or flammable gas.

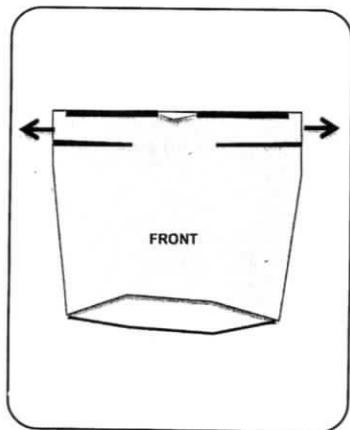
SKU	Model	Mil	Film Color	Material	Style	Span	Length	Case Pack	Cases/Pallet
1017888, 130167*	68 - L	1.5	Blue	Polyethylene	Group Folded	68"	50"	75	40
Tgown	68 - L	1.5	Blue	Polyethylene	Group Folded	68"	50"	50	84
130153	78 - XL	1.5	Blue	Polyethylene	Individually Folded	78"	54"	100	63

*Identical gowns. SKU number represents manufacturing facility.

For more information contact ppeproducts@novolex.com



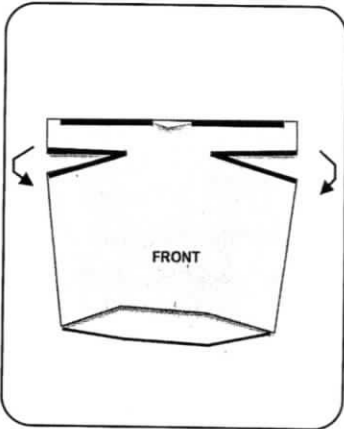
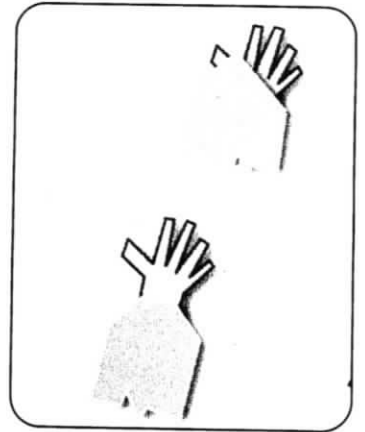
Instructions for Isolation Gown (T style)



1 Open the gown, insert arms and pull the gown over the head and neck

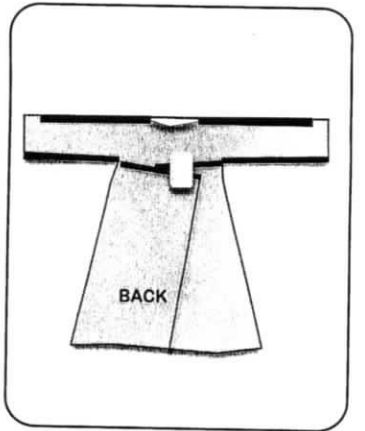
Push hands through gap in end of the sleeves **2**

(gown color may vary)



3 Tear sleeve perforations to separate the sleeves from the body of the gown

Secure the side flaps on the back with adhesive label or tape **4**



Complete coverage when finished

For removal:
Gowns tear at seams
Follow CDC guidelines for proper removal of all PPE

For more information contact ppeproducts@novolex.com



www.novolex.com | 800-845-6051 | ©April 2020 Novolex™
N_FL_0736_0420

